

Hanse



Microscope

HVS-CM500PC(USB) User's guide



Reg. No. 249826 for MicroScope & Reg. No. 0246851 for multifunctional zoom camera as a practical new device field in Korean Intellectual Property Office
Thank you for purchasing Hanse MicroScope

**Warning : Please read this user s guide prior to use.
Never use this product for observing your or other people's eyes as LED light cause eye s injury.**

1. Contents

1. Contents	3
2. Caution	4
3. Main features	5
4. Application	6
5. Composition	7
6. Name of each part	7
7. How to use the mirror for ear observation	8
8. Applicable system network	8
9. Specifications	9
10. Install of Hardware	10
11. System Requirements	12
12. Install Program	12
13. How to uninstall program	23
14. How to update program	25
15. Warranty	26

2. Caution

This user's guide shows you exactly the features and specifications of Hanse MicroScope HVS -CM500PC(USB).

For safe and right use, please read this user's guide and relevant cautions before using or installation.

Please keep this user's guide where you can get it easily whenever need.

- Please treat lens carefully like your eye to avoid any dust or fingerprint on it and use soft fabric or something similar when you cleaning the lens.
- To keep from damaging your HVS-CM500PC(USB) avoid exposing it to moisture and extreme temperatures.
- Do not use or store your HVS-CM500PC(USB) where strong electrostatic or electrical noise may be generated.
- Do not drop or give excessive shock to the HVSCM500PC(USB).
- Do not disassemble or touch the inside of the HVS-CM500PC(USB).
- This may result in malfunctions of the microscope.
- Do not use organic solvents, such as thinner or benzene, on to the HVS-CM500PC(USB).

3. Main features

This product is a multi-functional zoom camera available to various application that s more convenient to use than others with the following excellent features.

- USB 1.1 compliant(USB interface)
- 1/3inch CMOS VGA(640X480) CIF(320X240)
- Portable with compact size
- X20~X75 Magnification with 17 monitor (It depends on the distance of object)
- LED for colse photography
- Several images can be analyzed, recorded and printed with S/W
- Image capture by H/W & S/W
- Beauty care, education tool, inspection for components can be applied

4. Application



◀ Beauty cares
Observing skin and
hair condition



▲ Education tool in
school

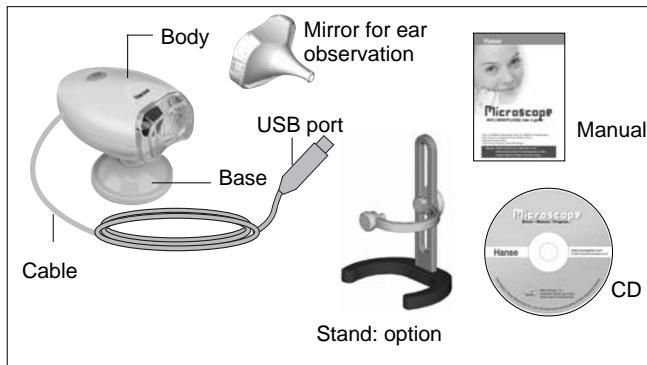


◀ Electronic components
inspection

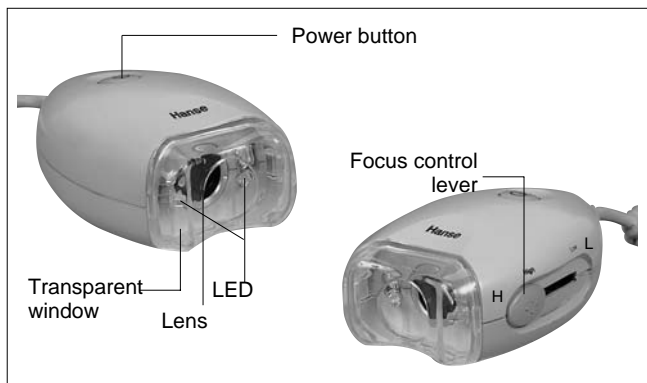
◀ Applicable to
CCTV camera and
camcorder's
substitute

※ LED function is to be operated only for close distance
photographing

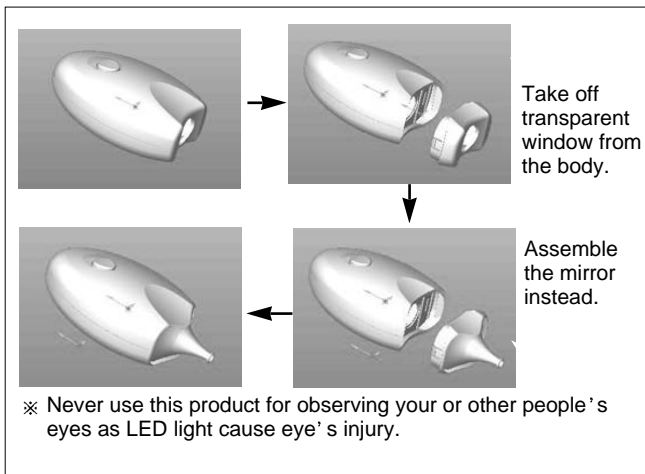
5. Composition



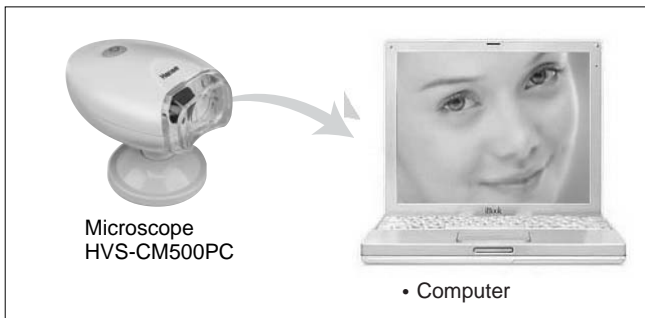
6. Name of each part



7. How to use the mirror for ear observation



8. Applicable system network



9. SPECIFICATIONS

Description	HVS-CM500PC
Image Sensor	318,000 pixels (VGA 1/3" CMOS)
Device Type	Digital Video Camera
Frame Rate	Up to 30 frames
Interface	USB Specification 1.1
Signal/Noise Ratio	c.56dB
Pixel Resolution	640 × 480(VGA)
Exposure Control	Automatic(to+82dB)
Gain Control	Automatic(to+24dB)
USB Cable	1.5m ± 0.2
Supply Voltage	4V1~6V0 DC (Internally regulated)Through USB
• 20~75, ∞ magnification	

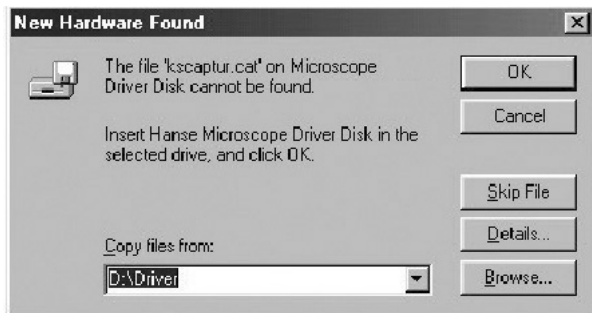
10. Installation of Hardware

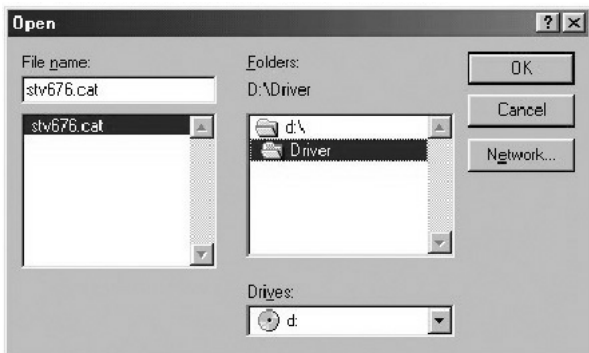
1. Install with Plug&Play Process

- 1) Connect MicroScope to USB port of your computer
- 2) After the message of "New Hardware Found" in the window of the wizard of Adding new Hardware, Check the driver for the device and the click "OK"

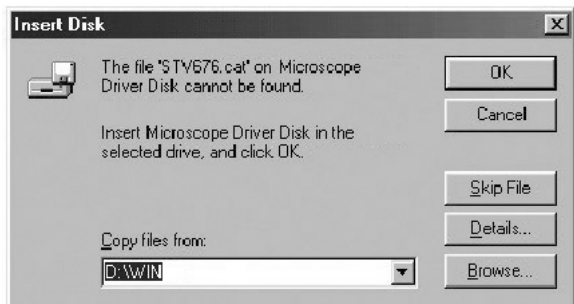


- 3) Click " Browse " botton





- 4) After checking driver folder in the CD-Rom drive and then click "OK" button.



- 5) After the message of "Insert the disk on copying file" and then click " OK" button.

11. System Requirements

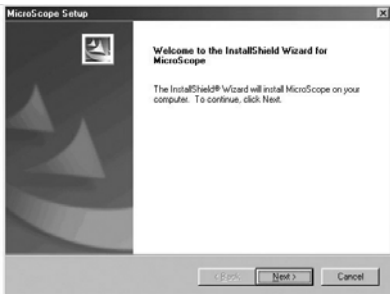
Windows 98/SE, Windows ME, Windows 2000, XP
Pentium 300Mhz or better, 32MB RAM or Higher,
Available USB Port, 1024 768/16-bit display

12. To Install Program

1. To Install Program

1) Installation.

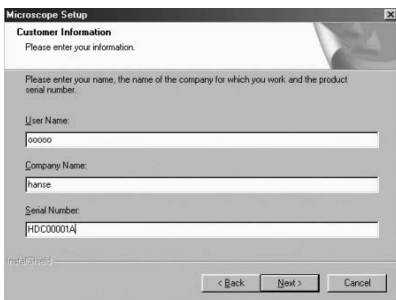
- After executing the setup.exe file in the CD-Rom drive, program setup is started.
- After the window of program version is displayed, click "Enter" button.



Select I accept the terms of the license agreement and Press the “next” button.

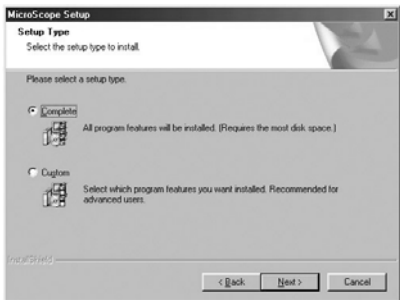


- Fill user name, company name and serial no. in the customer information.
- The serial no. is as below :
Ex) HDC00000A
H-Hanse (Company name)
D-Manufacturing Year
C-Manufacturing Month
00000 - Serial no of Manufacturing.
A-Manufacturer(If the Hanse, this is able to be omitted.)

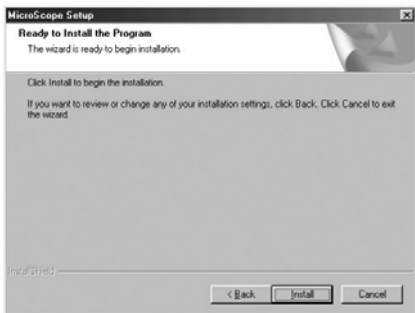


- User name and company name out in customer s

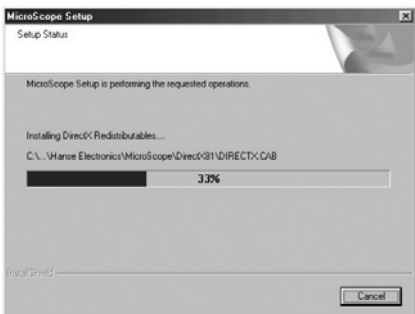
information window and click the “next” button.



- Select the installation type users want to and click the next button.
- Complete option is recommended for users .



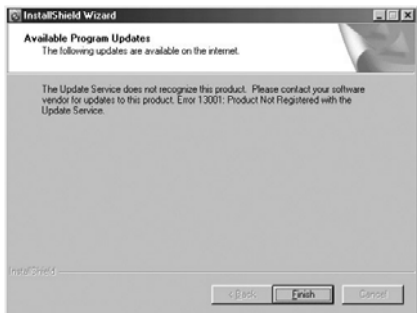
- Click the “install” button to set up the program.



- Window is appeared for displaying installation.



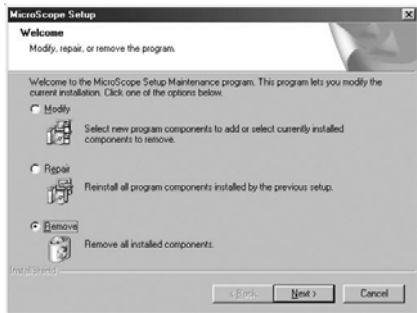
- The program will be updated on our homepage and to renew the updated program ,choose Yes, check for program updates and click the finish button.



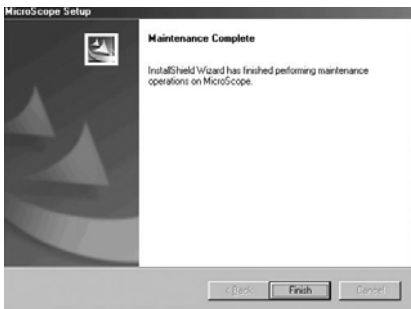
- After finishing renewing program, click the Finish button, then installation is completed successfully.

2) Note

- In case microscope program was installed before, execute the existed set up program again.



- Above the window, select the Remove button and click the Next button.
- After remove the program completely, execute the new version of setup.exe and install program again.



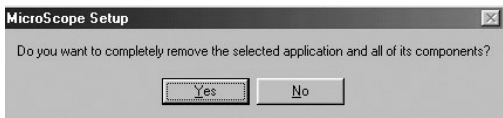
2. Program Manual

1) Starting program

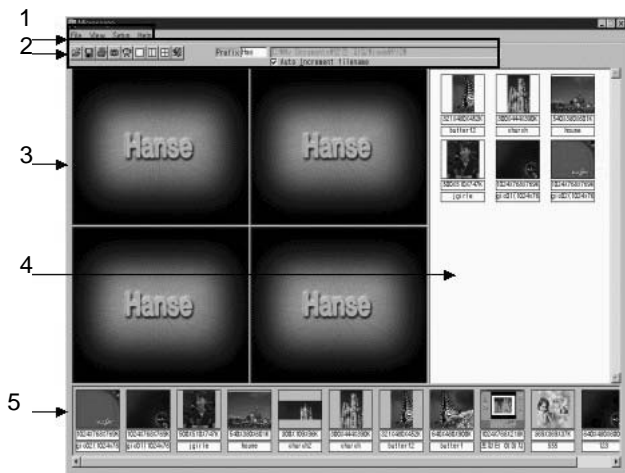
- Connect to USB camera and click MicroScope icon to start(Start -> Program -> Hanse -> MicroScope

Note

- Don't start program without MicroScope. If you do without connecting MicroScope to PC, you'll see the below message.
- In this case, start the program after connecting MicroScope to PC,.
- To see only capture screen without live screen, click Enterbutton.



- In case you connect MicroScope to PC, the above warning message won't appear.



- 1 : Menu window
- 2 : Tool window
- 3 : Screen window
- 4 : Folder window
- 5 : Temp window

1-1) Menu window

File View Setup Help

. Pointing Menu

File

. When click File , pop up menu shows Open, Print, Print Setup, Exit in a row.

(1) File



- Driver window It shows saving driver and folder.
- Picture file window It shows chosen driver and picture file in folder.



- **Print** : Open Print Setup Mode and Pre-view.
- **Print Setup** : Open Print Setup mode which is set by default.
- **Exit** : Exit the program

(2) view



When click View pop up menu shows Division 1,2,4 .

- **Division1** : Screen 1 (640 480)
- **Division2**: Screen 2 (320 240)
- **Division4**: Screen4 (320 240)

(3) Setup



- . When click Setup , pop up menu shows '**Auto Increment File Name**'

Auto Increment File Name : When save files,it determines whether to save one picture or automatically save with the increasing series number.

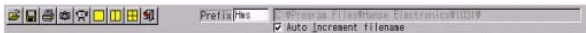
(4) Help



When click Help pop up menu shows '**About**' .

About : It is description of product (version, manufacturer, etc...)

1-2) Tool window



- . The functions of below icons are the same to the menu.
- . **How to delete Image file**
- . Click on Open to choose an Image of folder screen saved as Image Capture, then click right button of mouse so as to run Delete function
- . **How to save Image folder**
- . Please refer to the following Image saving default load and type.
 C:\Program Files\Hanse Electronics\Date\xxx0000YY
 Date : four digit number ex) 0717
 XXX-Prefix name : (five digit)loaded name ex) Hms
 OOOO-Minute : four digit number ex) 1130
 YY-serial-No. : serial number ex) 11
 Ex) C:\Program Files\Hanse Electronics\0717\Hms113011



: File Open



:File Save



: Print



: Snap Shot



: Live/Capture

- In case of screen 1, you can choose the main screen between live or capture.
- In case of screens 2, you can choose the left side screen between live or capture.
- In case of screens 4, you can select one top and left side screen between live or capture.



: Division

- You can select screen as one full screen, two screens and four screens.



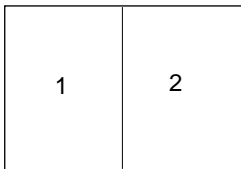
: Exit

C:\Program Files\Hanse Electronics\1031

- You can put the head letter of title for screen that you want to record.
- You can define the location of file that you want to capture.

1-3) Screen window

- Screen 1 shows Live and Capture .
- Screen 2 shows Capture only and screen 4 can be chosen between Live and Capture .

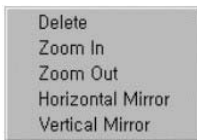


- Screen 2,3,4 shows Capture only and screen 1 can be

chosen between Live and Capture .

1	2
3	4

In the image is on, click the right mouse button and then the popup menu is appeared as like below.



Delete : Delete the image.

Zoom In : The image can be magnified 12 times.

Zoom Out : The image can be zoomed out to 160*120.

Horizontal Mirror : Reverse the right and left image.

Vertical Mirror : Reverse the up and down image.

1-4) Folder window

- This window shows picture file which would be now loaded.
- When picture is captured, this windows shows the captured picture.

1-5) Temp window

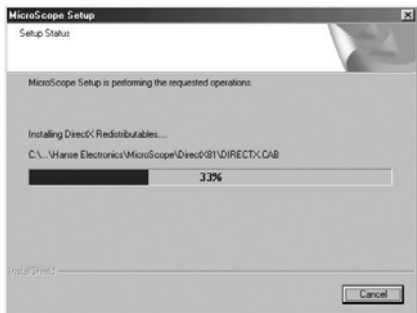
- When double-click the picture which was saved at folder, the picture is saved at Temp window.
- When double-click the screen of Temp Window, the saved pictures are shown at screen window in a row.

13. How to uninstall program

1. How to Remove program

1) As the picture, you can delete the program. (Start--> Program--> Hanse--> Uninstall)

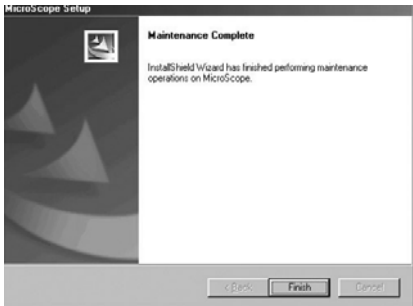
2) As the picture, the window is appeared.



3) Select the Remove, and click the next button.



- 4) Click the Yes.
- 5) Restart the computer and the un-installment is completed.



2. Remove in the Control Panel

- 1) Click Start--> Control Panel --> Add/Remove Program.
- 2) Remove the Microscope.

3. Remove in the installer

- 1) Execute the "setup" file.
- 2) Choose "Remove".

14. How to update program

Please look through Hanse Electronics website

<http://www.hanseelec.co.kr>

- 1) When setup, next version will be uploaded at Hanse website.
- 2) Run with download program from Hanse website

15. Warranty

How to get A/S

PRODUCT	MicroScope		
MODEL	HVS-CM500PC		
DATE OF PURCHASE	YEAR	MONTH	DATE
TERMS OF WARRANT			
SALES AGENT			
ADDRESS OF SALES			
AGENT			

We will guarantee as follows :

1. This product is made through rigid quality control and test process.
2. case that this product is out of order due to the defect in manufacturing with proper handling, A/S will be afforded at free of charge for one year after purchasing date.
3. In case of the followings, Hanse will afford A/S with charge of cost even through warrant period.
 - 1) Out of order by user's mishandling or move
 - 2) In case of wrong repair or damage by modification of inner part
 - 3) Out of order by natural disaster or disorder in power source
 - 4) In case of omission, correction without confirmation, loss of warranty card.
4. Please be careful of keeping this warranty card as it won't be reissued.
5. Please surely present the warranty card in A/S request.

Hanse

Hanse Electronics Co., Ltd.

Seoul Office :

260-7, Youmchang-Dong, Gangseo-Gu, Seoul 157-862, Korea

Tel: +82-2-6675-2500 Fax: +82-2-6675-2501

<http://www.hanseelec.com> E-mail : hanse@hanseelec.co.kr

Factory :

4L, 33B, Namdong-Industrial Zone, 613-3, Namchon-Dong,
Namdong-Gu, Incheon 405-846, Korea

Tel: +82-32-816-8700 Fax: +82-32-818-4473